

How to use AEB sheets

If used correctly, AEB **filter sheets** guarantee **excellent filter performance**, with a reduced loss of product through dripping and low colour absorption. To make the most of the filter media, it is important not to use damaged filter sheets or ones that have been tampered with and to handle the filter sheets with extreme care. When they are placed in the **filter press**, avoid knocking, bending or scratching them and follow the indications carefully given in our tutorial.

How to position the filter sheet



Coarse side



Smooth side

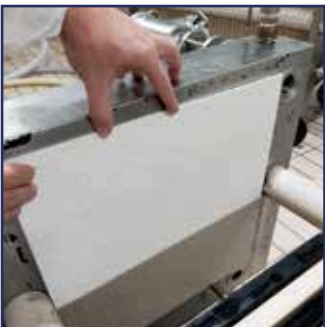
The filter sheet has a smooth side and a coarse side. **The liquid should always enter on the coarse side and exit in the smooth side.**

Checking the state of the gaskets



Check the gaskets for wear which could cause abnormal dripping from the sheet.

Tutorial on how to correctly assemble the filter sheets



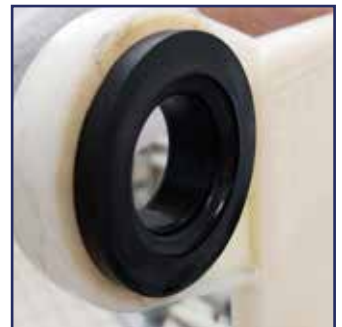
Step 1
insert the first sheet so that the coarse side is facing towards the direction from which the liquid enters.



Close-up of the cloudy liquid on the frame.



Step 2
Insert the second sheet in the opposite direction (i.e. position it with the coarse side facing the direction from which the liquid enters).



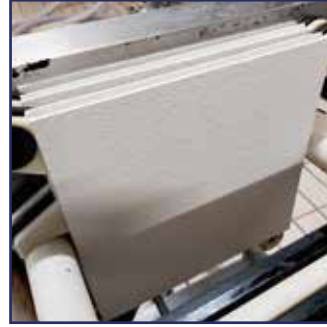
Close-up of the filtered liquid on the frame.



Step 3
Insert the third sheet in the opposite direct with respect to the sheet previously inserted.



Step 4
Insert the fourth sheet in the opposite direct with respect to the sheet previously inserted.



Step 5
Insert the fifth sheet in the opposite direct with respect to the sheet previously inserted.



Step 6
Complete the filter pack with all the frames.



Step 7
Make sure that the sheet is not "pinched" between the gasket and the frame.



Step 8
Lubricate the worm screw (this should be done periodically).



Step 9
Close the filter pack without completely compressing the sheets.



Step 10
Start the pump to draw in water to dampen the filter pack for about 3-4 minutes.



Step 11
Stop the pump and add citric acid to the washing water.



Step 12
Start the pump again at a speed 1.5 times faster than the filtering speed for about 5 minutes.



Step 13
After 5 minutes, check that the water does not have a "paper" taste".



Step 14
Stop the pump and close the filter pack completely.



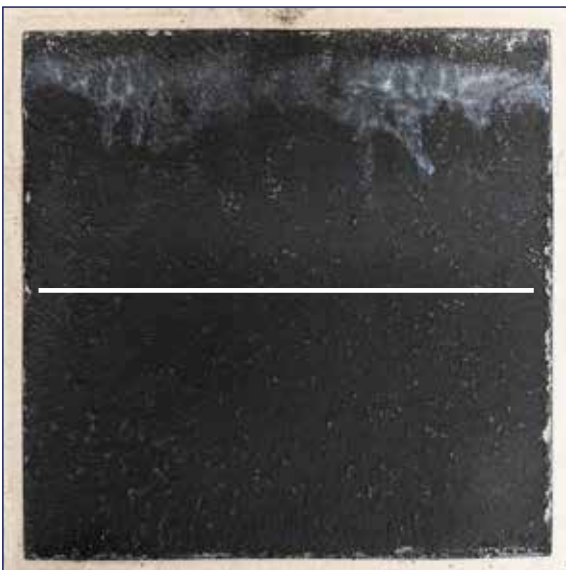
Step 15
Measure the distance between the two head frames on both the right and left side on the filter press to ensure that the latter closes symmetrically, preventing any abnormal dripping.



Step 16
Connect the steam generator to the filter and sterilise the filter pack for 20 minutes with maximum steam 1 Bar at 120.6 °C. Lastly, cool the system and then start the filtering process.

How to get the best out of the sheets

If you look at the image carefully, you will notice how under the line drawn, the filter surface is darker, which shows that the sheet has filtered more than the upper part. The customer filtered a product containing carbon, but while filling the filter press system, the 4 side vents were not opened. This led to the **filter being filled unevenly**; consequently, **the filter sheet** (in this case 40x40) **did not filter evenly**. You should always check this detail at the end of filtration to ensure that the filter has worked correctly.



Close-up of the sheet at the end of the filtration process where the vents are not opened when filling the filter press.